

Flexibore® 100

Flexible rising main



Flexibore 100 coupling set

IDEAL FOR

- Bore water pumping
- Kink-free handling
- Easy installation
- Rapid pump retrieval
- Low-cost pumping

FEATURES

- ✓ Designed for ground water pumping
- ✓ Boreholes up to 100 m deep
- ✓ High tensile - no safety cable required
- ✓ Secure couplings
- ✓ Flexible - easy to install and retrieve
- ✓ Dilates - no internal build-up
- ✓ Australian Made

OTHER SPECS

| | |
|--|--------|
| Water pH | 4 to 9 |
| Max. operating temperature | 40°C |
| Max. diametric dilation | 10 % |
| Max. extension** | 2 % |
| Safety factor | 2.5:1 |
| **within recommended operating parameters. | |

Flexibore 100 is a high-quality layflat hose manufactured for use with submersible pumps. Its revolutionary flexible design simplifies bore water pumping replacing cumbersome rigid pipe.

Flexibore 100 is manufactured by weaving a textile reinforcement of high-tensile polyester, then extruded with hydrolysis-resistant polyurethane. The woven polyester textile reinforcement gives the hose a high burst pressure and tensile strength, enough to handle the weight of the pump and the column of water. With **Flexibore 100** and patented couplings, this flexible riser needs no safety cable.

Installing **Flexibore 100** is easy! Manufactured in 32 mm & 51 mm diameters, it comes compactly coiled in one continuous length; the secure couplings can be easily attached on-site. A coloured strip with intermittent loops every metre runs along the length of the hose. This allows for the secure attachment of the power cable and prevents its possible rubbing against the bore casing.

Flexibore 100 can dilate up to 10%, making it extremely efficient in reducing pumping costs and friction loss. By dilating under pressure, no internal build-up of iron bacteria occurs, as can be the case with rigid pipe use such as poly pipe or steel.

Proudly manufactured in Australia by Crusader Hose, **Flexibore 100** is made to suit most lower-flow bore water pumping applications.



Scan here to watch the video

TECHNICAL DATA

| Diameter (ID) | 32 mm | 51 mm |
|-----------------------------------|-----------|-----------|
| | 1.25" | 2" |
| Max. operating head | 100 m | 100 m |
| Burst pressure | 7000 kPa | 4600 kPa |
| Peak tensile load | 2 t | 3 t |
| Recommended max. tensile load | 0.8 t | 1.2 t |
| Weight of hose/m | 0.33 kg | 0.48 kg |
| Coupling OD | 65 mm | 90 mm |
| Coupling thread size | 32 mm | 50 mm |
| Weight of S/S coupling | 0.6 kg | 1.7 kg |
| Weight of water/m at 10% dilation | 1 kg | 2.4 kg |
| Max. flow rate | 2 L/s | 6 L/s |
| Fitting bolt torque* | 6 Nm | 15 Nm |
| Part # Flexibore 100 hose | HFA032XUA | HFA051XUA |
| Part # Flexibore 100 coupling set | CLF032ACE | CLF050ACE |

*Rocol nickel-based anti-seize or equivalent must be applied to the bolt thread.

NOTE: For operation beyond stated recommended operating limits, contact your Flexibore distributor.

Crusader Hose Pty Ltd

22 Industry Place, Bayswater VIC 3153 Australia
 e: sales@crusaderhose.com.au p: +61 3 9720 1100
www.crusaderhose.com.au

2312b



Flexibore® 100 Installation Accessories



CABLE TIES

Cable Ties are a quick and easy way to secure your power cable to Flexibore. Flexibore is manufactured with a coloured strip that creates loop attachment points to secure your power cable. Depending on the thickness of the cables, one or two **Cable Ties** are required at each loop point. Loop attachment points are found at every 1 metre.

| | | |
|---------------------------|-----------|-------|
| Hose diameter (ID) | 32 mm | 51 mm |
| | 1.25" | 2" |
| Weight/each | 0.01 kg | |
| Part # | ACF001JEA | |



For the Flexibore warranty to remain valid, only Crusader Hose-approved cable ties may be used.

1.2 TONNE LIFTING CLAMP

Lifting Clamps are an essential accessory for the safe installation of your submersible pump with Flexibore. Depending on the chosen installation method, one or two **Lifting Clamps** may be required. Refer to the User Guide.

| | |
|--------------------------------|--------------------------|
| Rating | 1.2 Tonne |
| Hose compatibility (ID) | 32 mm - 152 mm |
| | 1.25" - 6" |
| Weight | 11 kg |
| Dimensions | 450 mm x 100 mm x 170 mm |
| Part # | ACF012ASB |



FLEXIBORE 100 INSTALLATION ROLLER v2

The **Flexibore 100 Installation Roller v2** has been designed to assist in installing and retrieving your submersible pump using Flexibore 100. The Installation Roller comprises the frame, roller, two R-clips and a 450 kg rated strap. The frame has three pairs of roller mounting holes to accommodate a variety of bore casing diameters.

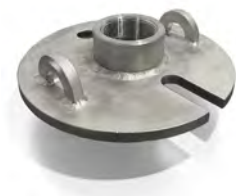
| | |
|-------------------|-----------|
| Rated load | 150 kg |
| Proof load | 300 kg |
| Weight | 3 kg |
| Part # | ACF002BSA |



BORE CAPS

Stainless steel or galvanised **Bore Caps** are available in a variety of sizes.

| | | | |
|---------------|------------------|------------------|---------------|
| Part # | 32 mm Galvanised | 50 mm Galvanised | 50 mm 316 S/S |
| | ACF032HGA | ACF050HGA | ACF050HDA |



ADAPTORS & SOCKETS

High-quality stainless steel **Adaptors and Sockets** for alternative configurations are also available. Please contact the Sales Team for more information.

Crusader Hose Pty Ltd

22 Industry Place, Bayswater VIC 3153 Australia
 e: sales@crusaderhose.com.au p: +61 3 9720 1100

www.crusaderhose.com.au

2312b



Flexibore® 250

Flexible rising main



Flexibore 250 coupling set

IDEAL FOR

- Bore water pumping
- Potable water use
- Easy installation
- Rapid retrieval
- Low-cost pumping

Flexibore 250 is a high-quality layflat hose manufactured for use with submersible pumps. Its revolutionary flexible design simplifies bore water pumping replacing cumbersome rigid pipe.

Flexibore 250 is manufactured by weaving a textile reinforcement of high-tensile polyester and extruded with hydrolysis-resistant polyurethane. The woven polyester fabric gives the hose a high burst pressure for deep bore pumping. It is designed to handle the weight of the pump and column of water up to 250 m deep.

Secure couplings are easily attached on-site. A coloured strip with loops every metre runs along the hose length. These loops allow for the power cable's secure attachment and prevent possible rubbing of the cable against appropriately-sized bore casings.

Flexibore 250 can dilate up to 15%, making it extremely efficient in reducing pumping costs and friction loss. By dilating under pressure, no internal build-up of iron bacteria occurs, as seen with rigid pipe use such as poly pipe or fibreglass.

Proudly manufactured in Australia by Crusader Hose, **Flexibore 250** is made to suit most bore water pumping applications. It is manufactured in a large range of diameters from 40 mm to 152 mm and is available in continuous lengths of up to 250 m. Each roll is fully tested at our factory prior to despatch.

FEATURES

- ✓ Deep groundwater pumping up to 250 m
- ✓ Ultra-high tensile for large submersible pumps
- ✓ Flexible - easy to install and retrieve
- ✓ Dilates - no internal build-up
- ✓ Rigorously tested
- ✓ Secure couplings
- ✓ Australian Made

TECHNICAL DATA

| Diameter (ID) | 40 mm | 51 mm | 76 mm | 102 mm | 127 mm | 152 mm | |
|-----------------------------------|-----------|-----------|-----------|-----------|-----------|-----------|-----------|
| | 1.5" | 2" | 3" | 4" | 5" | 6" | |
| Max. operating head | 250 m | 250 m | 250 m | 250 m | 250 m | 250 m | |
| Burst pressure | 7200 kPa | 7400 kPa | 5800 kPa | 5200 kPa | 5000 kPa | 5800 kPa | |
| Peak tensile load | 3.5 t | 3.2 t | 8.3 t | 10 t | 14.5 t | 21 t | |
| Rec. max. tensile load | 1.7 t | 1.6 t | 4.2 t | 5 t | 7.3 t | 10 t | |
| Weight of hose/m | 0.4 kg | 0.6 kg | 0.9 kg | 1.5 kg | 2.1 kg | 2.5 kg | |
| Coupling OD | 75 mm | 90 mm | 120 mm | 150 mm | 170 mm | 195 mm | |
| Weight of S/S coupling | 1.3 kg | 2.8 kg | 5.5 kg | 7.8 kg | 11.7 kg | 13 kg | |
| Weight of water/m at 10% dilation | 1.2 kg | 2.2 kg | 3.7 kg | 8.9 kg | 14.3 kg | 19.8 kg | |
| Max. flow rate | 4 L/s | 6 L/s | 18 L/s | 40 L/s | 55 L/s | 90 L/s | |
| Fitting bolt torque* | 6 Nm | 15 Nm | 30 Nm | 30 Nm | 30 Nm | 30 Nm | |
| Part # Flexibore 250 hose | HFB040XUA | HFB051XUA | HFB076XUA | HFB102XUA | HFB127XUA | HFB152XUA | |
| Part # Flexibore 250 coupling set | 304 S/S | CLF040BCE | CLF050BCE | CLF076BCE | CLF102BCE | CLF127BCE | CLF152BCE |
| | 316 S/S | CLF040BDE | CLF050BDE | CLF076BDE | CLF102BDE | CLF127BDE | CLF152BDE |

*Rocol nickel-based anti-seize or equivalent must be applied to the bolt thread.

OTHER SPECS

| | |
|-------------------------|--------|
| Water pH | 3 to 9 |
| Max. operating temp | 70 °C |
| Max. diametric dilation | 15 % |
| Max. extension** | 2 % |
| Safety factor | 2:1 |

**within recommended operating parameters.

NOTE: For operation beyond stated recommended operating limits, consider **Flexibore 300** or contact your Flexibore distributor.



Scan here to watch a Flexibore installation

Crusader Hose Pty Ltd

22 Industry Place, Bayswater VIC 3153 Australia
 e: sales@crusaderhose.com.au p: +61 3 9720 1100
www.crusaderhose.com.au

2312b



Flexibore® 150

Flexible rising main



Flexibore 150 coupling set

Flexibore 150 is our large diameter, high-quality layflat bore hose available in both 8" and 10". Its revolutionary flexible design simplifies bore water pumping replacing cumbersome rigid pipe.

Flexibore 150 is manufactured by weaving a textile reinforcement of high-tensile polyester and extruded with hydrolysis-resistant polyurethane. The woven polyester fabric gives the hose a high burst pressure for deep bore pumping. It is designed to handle the weight of the submersible pump and the column of water up to 150 m deep.

Secure couplings can be easily attached on-site. A coloured strip with loops every metre runs along the length of the hose. These loops allow for the power cable's secure attachment and prevent possible rubbing of the cable against appropriately sized bore casings.

Flexibore 150 can dilate up to 15%, making it extremely efficient in reducing pumping costs and friction loss. By dilating under pressure, no internal build-up of iron bacteria occurs as seen with rigid pipe use such as poly pipe or fibreglass.

Proudly manufactured in Australia by Crusader Hose, **Flexibore 150** is made to suit most bore water pumping applications requiring a large diameter hose. Each roll is fully tested at our factory prior to despatch.

IDEAL FOR

- Bore water pumping
- Potable water use
- Easy installation
- Rapid retrieval
- Low-cost pumping

FEATURES

- ✓ Large-diameter groundwater pumping up to 150 m
- ✓ Ultra-high tensile for large submersible pumps
- ✓ Flexible - easy to install and retrieve
- ✓ Dilates - no internal build-up
- ✓ Rigorously tested
- ✓ Secure couplings
- ✓ Australian Made

TECHNICAL DATA

| | 203 mm | 254 mm |
|-----------------------------------|-----------|-----------|
| Diameter (ID) | 8" | 10" |
| Max. operating head | 150 m | 150 m |
| Burst pressure | 4200 kPa | 4200 kPa |
| Peak tensile load | 22 t | 20 t |
| Recommended max. tensile load | 11 t | 10 t |
| Weight of hose/m | 3.4 kg | 4.5 kg |
| Coupling OD | 270 mm | 320 mm |
| Weight of S/S coupling | 41 kg | 45 kg |
| Weight of water/m at 10% dilation | 35.2 kg | 56.1 kg |
| Max. flow rate | 148 L/s | 200 L/s |
| Fitting bolt torque* | 130 Nm | 85 Nm |
| Part # Flexibore 150 hose | HFB203XUA | HFB254XUA |
| Part # Flexibore 150 coupling set | CLF203BDE | CLF254BDE |

*Rocol nickel-based anti-seize or equivalent must be applied to the bolt thread.

OTHER SPECS

| | |
|-------------------------|--------|
| Water pH | 3 to 9 |
| Max. operating temp | 70 °C |
| Max. diametric dilation | 15 % |
| Max. extension** | 2 % |
| Safety factor | 2:1 |

**within recommended operating parameters.

NOTE: For operation beyond stated recommended operating limits, contact your Flexibore distributor.



Scan here to learn more

Crusader Hose Pty Ltd

22 Industry Place, Bayswater VIC 3153 Australia
 e: sales@crusaderhose.com.au p: +61 3 9720 1100

www.crusaderhose.com.au

2312b



Flexibore® 300

Flexible rising main



Flexibore 300 coupling set

IDEAL FOR

- Super-deep bore water pumping
- Low-cost pumping
- Easy installation
- Rapid retrieval
- Continuous length

Flexibore 300 is a high-quality layflat hose manufactured for use with submersible pumps. Its revolutionary flexible design simplifies bore water pumping replacing cumbersome rigid pipe.

Flexibore 300 is manufactured by weaving a textile reinforcement of high-tensile polyester and extruded with hydrolysis-resistant polyurethane. The woven polyester fabric gives the hose a high burst pressure for super-deep bore pumping. It is also designed to handle the weight of the pump plus the column of water up to 300 m deep.

Secure couplings are easily attached on-site. A coloured strip with loops every half metre runs along the hose length. These loops allow for the power cable's secure attachment and prevent possible rubbing of the cable against appropriately sized bore casings.

Flexibore 300 can dilate up to 10%, making it extremely efficient in reducing pumping costs and friction loss. By dilating under pressure, no internal build-up of iron bacteria occurs, as seen with rigid pipe use such as steel or fibreglass.

Proudly manufactured in Australia by Crusader Hose, **Flexibore 300** is made to suit super-deep bore water pumping applications. It is made in a large range of diameters from 76 mm to 152 mm and is available in continuous lengths of up to 300 m. Each roll is fully tested at our factory prior to despatch.

FEATURES

- ✓ Super-deep groundwater pumping up to 300 m
- ✓ Ultra-high pressure
- ✓ High tensile for very large submersible pumps
- ✓ Flexible - can be rolled up
- ✓ Dilates - no internal build-up
- ✓ Rigorously tested
- ✓ Secure couplings
- ✓ Australian Made

TECHNICAL DATA

| Diameter (ID) | 76 mm | 102 mm | 127 mm | 152 mm | 203 mm |
|--|-----------|-----------|-----------|-----------|-----------|
| | 3" | 4" | 5" | 6" | 8" |
| Max. operating head | 300 m | 300 m | 300 m | 300 m | 300 m |
| Burst pressure | 8000 kPa | 8000 kPa | 7000 kPa | 7000 kPa | 7000 kPa |
| Peak tensile load | 10 t | 15 t | 20 t | 25 t | 40 t |
| Recommended max. tensile load | 5 t | 7.5 t | 10 t | 12.5 t | 20 t |
| Weight of hose/m | 1.5 kg | 2.3 kg | 3 kg | 3.5 kg | 4.4 kg |
| Coupling OD | 120 mm | 150 mm | 180 mm | 205 mm | 280 mm |
| Weight of S/S coupling | 6 kg | 8 kg | 12 kg | 14 kg | 42 kg |
| Weight of water/m at 10% dilation | 3.7 kg | 8.9 kg | 14.3 kg | 19.8 kg | 35.2 kg |
| Max. flow rate | 18 L/s | 40 L/s | 55 L/s | 90 L/s | 148 L/s |
| Fitting bolt torque* | 30 Nm | 30 Nm | 30 Nm | 55 Nm | 85 Nm |
| Part # Flexibore 300 hose | HCF076XUA | HCF102XUA | HCF127XUA | HCF152XUA | HCF203XUA |
| Part # Flexibore 300 coupling set in 316 S/S** | CLF076CDE | CLF102CDE | CLF127CDE | CLF152CDE | CLF203CDE |

*Rocol nickel-based anti-seize or equivalent must be applied to the bolt thread.
 **Coupling sets in Duplex 2205 & Super Duplex 2507 available on special order.

OTHER SPECS

| | |
|---|--------|
| Water pH | 3 to 9 |
| Max. operating temp | 70 °C |
| Max. diametric dilation | 10 % |
| Max. extension*** | 2 % |
| Safety factor | 2:1 |
| ***within recommended operating parameters. | |

NOTE: For operation beyond stated recommended operating limits, consider **Flexibore 400** or contact your Flexibore distributor.



Scan here to learn more

Crusader Hose Pty Ltd

22 Industry Place, Bayswater VIC 3153 Australia
 e: sales@crusaderhose.com.au p: +61 3 9720 1100
www.crusaderhose.com.au

2312b



Flexibore® 400

Flexible rising main



Flexibore 400 coupling set

IDEAL FOR

- Deep bore water pumping
- Low-cost pumping
- Easy installation
- Rapid retrieval
- Continuous length

Flexibore 400 is a high-quality layflat hose manufactured for use with submersible pumps. Its revolutionary flexible design simplifies bore water pumping replacing cumbersome rigid pipe.

Flexibore 400 is manufactured by weaving a textile reinforcement of high-tensile polyester and extruded with hydrolysis-resistant polyurethane. The woven polyester fabric gives the hose a high burst pressure for ultra-deep well pumping. It is designed to handle the weight of the pump and water up to 400 m deep.

Secure couplings are easily attached on-site. A coloured strip with loops runs along the hose length every half metre. These loops allow for the power cable's secure attachment and prevent possible rubbing of the cables against appropriately sized bore casings.

Flexibore 400 can dilate up to 10%, making it extremely efficient in reducing pumping costs and friction loss. By dilating under pressure, no internal build-up of iron bacteria occurs, as seen with rigid pipe use such as steel or fibreglass. Proudly manufactured in Australia by Crusader Hose, **Flexibore 400** is made to suit deep bore water pumping applications. It is manufactured in a large range of diameters from 76 mm to 152 mm and is available in continuous lengths of up to 400 m. Each roll is fully tested at our factory prior to despatch.

FEATURES

- ✓ Ultra-deep groundwater pumping up to 400 m
- ✓ Ultra-high pressure
- ✓ High tensile for very large submersible pumps
- ✓ Flexible - can be rolled up
- ✓ Dilates - no internal build-up
- ✓ Rigorously tested
- ✓ Secure couplings
- ✓ Australian Made

TECHNICAL DATA

| Diameter (ID) | 76 mm | 102 mm | 127 mm | 152 mm |
|--|------------|------------|-----------|-----------|
| | 3" | 4" | 5" | 6" |
| Max. operating head (m) | 400 m | 400 m | 400 m | 400 m |
| Burst pressure (kPa) | 11,000 kPa | 11,000 kPa | 9000 kPa | 9000 kPa |
| Peak tensile load | 14 t | 20 t | 25 t | 30 t |
| Recommended max. tensile load | 7 t | 10 t | 12.5 t | 15 t |
| Weight of hose/m | 1.5 kg | 2.3 kg | 3 kg | 3.5 kg |
| Coupling OD | 120 mm | 150 mm | 180 mm | 205 mm |
| Weight of S/S coupling | 6 kg | 8 kg | 12 kg | 14 kg |
| Weight of water/m at 10% dilation | 3.7 kg | 8.9 kg | 14.3 kg | 19.8 kg |
| Max. flow rate | 18 L/s | 40 L/s | 55 L/s | 90 L/s |
| Fitting bolt torque* | 30 Nm | 30 Nm | 30 Nm | 55 Nm |
| Part # Flexibore 400 hose | HFD076XUA | HFD102XUA | HFD127XUA | HFD152XUA |
| Part # Flexibore 400 coupling set in 316 S/S** | CLF076DDE | CLF102DDE | CLF127DDE | CLF152DDE |

*Rocol nickel-based anti-seize or equivalent must be applied to the bolt thread.
 **Coupling sets in Duplex 2205 & Super Duplex 2507 available on special order.

OTHER SPECS

| | |
|--------------------------|--------|
| Water pH | 3 to 9 |
| Max. operating temp | 70 °C |
| Max. diametric dialation | 10 % |
| Max. extension*** | 2 % |
| Safety factor | 2:1 |

***within recommended operating parameters.

NOTE: For operation beyond stated recommended operating limits, contact your Flexibore distributor.



Scan here to learn more

Crusader Hose Pty Ltd

22 Industry Place, Bayswater VIC 3153 Australia
 e: sales@crusaderhose.com.au p: +61 3 9720 1100

www.crusaderhose.com.au

2312b

