

Threaded Fittings

Premium quality Polypropylene threaded fittings from 1/2" to 2"



Philmac's robust threaded fittings provide precision BSP tapered threads that have been engineered to maximize sealing performance.

The versatile range is made from high performance, UV resistant polypropylene that does not absorb moisture.

Installation is quick, simple and reliable every time. Sizes from 1/2" to 2" have WaterMark approval meaning they are suitable for plumbing applications. What's more, all sizes are potable water (AS/NZ 4020) approved. Philmac's threaded fittings provide maximum versatility, delivering a high performance connection across a wide range of pressure ratings and chemical combinations*. The hexagonal and octagonal bodies makes them extremely simple to

install. Philmac recommends the application of PTFE tape to the thread ensuring sufficient is applied to ensure a water tight seal.

Philmac threaded fittings are suitable for working pressures up to PN16 (1600 kPa, 235 psi) for sizes up to 2", PN12 (1200 kPa, 175 psi) for 2-1/2" and PN10 (1000 kPa, 145 psi) for 3" and 4" sized fittings.

Philmac Threaded fittings are designed for cold water applications only. Exposure to elevated temperatures has a significant impact on the lifetime of the fittings. All projected lifetimes are based on an operating temperature of (20°C, 73 degrees Fahrenheit).

* Talk to Philmac for specific information on chemical resistance.

Product features

Quality Materials

Philmac threaded fittings are manufactured from high quality polypropylene that ensures strong connections for many years. The material also has a high degree of UV resistance to ensure long term performance even in direct sunlight.

Reliable, high quality threads

Philmac threaded fittings are manufactured in accordance to the company's ISO9001 quality endorsed standard. When using a Philmac BSP threaded fitting you can be sure the thread is to standard and will work everytime.

Hexagonal and Octagonal Design

Smart hexagonal and octagonal design makes the fittings compatible with tools and ensures that Philmac BSP threaded fittings are extremely easy to install.

Wide Range

Philmac threaded fittings are available in sizes up to 4" and also in the full range of configurations.

For more information please contact

Philmac 1800 755 899



The connection you can trust.

PHI0425-9/20-R

Premium Quality Threaded Fittings

All threaded fittings up to 2 inches, WaterMark approved



The connection you can trust.

PRODUCT NO.	SIZE	ORDER QUANTITY	CARTON QUANTITY			
-------------	------	----------------	-----------------	--	--	--



PLUGS - Small Bore (not WaterMark approved)

RXHP06	1/8"	10	-
RXHP08	1/4"	10	-
RXHP10	3/8"	10	-



PLUGS

90 4011 00	1/2"	20	1100
90 4022 00	3/4"	20	600
90 4033 00	1"	20	400
90 4044 00	1-1/4"	10	240
90 4055 00	1-1/2"	10	180
90 4066 00	2"	10	100



BUSHES - Small Bore (not WaterMark approved)

RXRB0806	1/4" x 1/8"	10	-
RXRB1006	3/8" x 1/8"	10	-
RXRB1008	3/8" x 1/4"	10	-
RXRB1506	1/2" x 1/8"	10	-
RXRB1508	1/2" x 1/4"	10	-
RXRB1510	1/2" x 3/8"	10	-
RXRB2008	3/4" x 1/4"	10	-
RXRB2010	3/4" x 3/8"	10	-



BUSHES

90 4121 00	3/4" x 1/2"	20	700
90 4131 00	1" x 1/2"	20	380
90 4132 00	1 x 3/4"	20	380
90 4141 00	1-1/4" x 1/2"	10	240
90 4142 00	1-1/4" x 3/4"	10	240
90 4143 00	1-1/4" x 1"	10	240
90 4151 00	1-1/2" x 1/2"	10	180
90 4152 00	1-1/2" x 3/4"	10	180
90 4153 00	1-1/2" x 1"	10	180
90 4154 00	1-1/2" x 1-1/4"	10	180
90 4161 00	2" x 1/2"	10	100
90 4162 00	2" x 3/4"	10	100
90 4163 00	2" x 1"	10	100
90 4164 00	2" x 1-1/4"	10	100
90 4165 00	2" x 1-1/2"	10	100
90 4186 00	3" x 2"	1	100
90 4187 00	3" x 2-1/2"	1	100
90 4106 00	4" x 2"	1	50
90 4108 00	4" x 3"	1	50

* Please note that not all products on the page may be Australian made.



THREADED FITTINGS

PRODUCT NO.	SIZE	ORDER QUANTITY	CARTON QUANTITY			
-------------	------	----------------	-----------------	--	--	--



NIPPLES - Small Bore (not WaterMark approved)

RXHN06	1/8"	10	-
RXRHN0806	1/4" x 1/8"	10	-
RXHN08	1/4"	10	-
RXRHN1006	3/8" x 1/8"	10	-
RXRHN1008	3/8" x 1/4"	10	-
RXHN10	3/8"	10	-
RXRHN1508	1/2" x 1/4"	10	-
RXRHN1510	1/2" x 3/8"	10	-

NIPPLES

90 4211 00	1/2"	20	700
90 4221 00	3/4" x 1/2"	20	480
90 4222 00	3/4"	20	420
90 4231 00	1" x 1/2"	20	340
90 4232 00	1" x 3/4"	20	260
90 4233 00	1"	20	260
90 4241 00	1-1/4" x 1/2"	10	180
90 4242 00	1-1/4" x 3/4"	10	170
90 4243 00	1-1/4" x 1"	10	160
90 4244 00	1-1/4"	10	150
90 4251 00	1-1/2" x 1/2"	10	140
90 4252 00	1-1/2" x 3/4"	10	140
90 4253 00	1-1/2" x 1"	10	140
90 4254 00	1-1/2" x 1-1/4"	10	110
90 4255 00	1-1/2"	10	100
90 4261 00	2" x 1/2"	10	90
90 4262 00	2" x 3/4"	10	90
90 4263 00	2" x 1"	10	90
90 4264 00	2" x 1-1/4"	10	80
90 4265 00	2" x 1-1/2"	10	80
90 4266 00	2"	10	60
90 4277 00	2-1/2"	1	90
90 4286 00	3" x 2"	1	70
90 4287 00	3" x 2-1/2"	1	70
90 4288 00	3"	1	65
90 4208 00	4" x 3"	1	50
90 4200 00	4"	1	35



SOCKETS - Small Bore (not WaterMark approved)

RXHS06	1/8"	10	-
RXRHS0806	1/4" x 1/8"	10	-
RXHS08	1/4"	10	-
RXRHS1006	3/8" x 1/8"	10	-
RXRHS1008	3/8" x 1/4"	10	-
RXHS10	3/8"	10	-
RXRHS1508	1/2" x 1/4"	10	-
RXRHS1510	1/2" x 3/8"	10	-



* Please note that not all products on the page may be Australian made.

PRODUCT NO.	SIZE	ORDER QUANTITY	CARTON QUANTITY			
-------------	------	----------------	-----------------	--	--	--

SOCKETS

90 4311 00	1/2"	20	380			
FXRHS2008	3/4" x 1/4"	10	10			
90 4321 00	3/4" x 1/2"	20	280			
90 4322 00	3/4"	20	280			
90 4331 00	1" x 1/2"	20	180			
90 4332 00	1" x 3/4"	20	180			
90 4333 00	1"	20	180			
90 4342 00	1-1/4" x 3/4"	10	120			
90 4343 00	1-1/4" x 1"	10	110			
90 4344 00	1-1/4"	10	110			
90 4352 00	1-1/2" x 3/4"	10	100			
90 4353 00	1-1/2" x 1"	10	100			
90 4354 00	1-1/2" x 1-1/4"	10	90			
90 4355 00	1-1/2"	10	90			
90 4361 00	2" x 1/2"	10	70			
90 4362 00	2" x 3/4"	10	60			
90 4363 00	2" x 1"	10	60			
90 4364 00	2" x 1-1/4"	10	50			
90 4365 00	2" x 1-1/2"	10	50			
90 4366 00	2"	10	50			



TEES FI

90 4511 00	1/2"	10	210			
90 4522 00	3/4"	10	120			
90 4533 00	1"	10	80			
90 4544 00	1-1/4"	5	40			
90 4555 00	1-1/2"	5	30			
90 4566 00	2"	1	21			



ELBOWS - Small Bore MI x MI (not WaterMark approved)

RXTME06	1/8"	10	-			
RXTME08	1/4"	10	-			
RXTME10	3/8"	10	-			





THREADED FITTINGS

PRODUCT NO.	SIZE	ORDER QUANTITY	CARTON QUANTITY			
-------------	------	----------------	-----------------	--	--	--

ELBOWS FI

90 4611 00	1/2"	10	300			
90 4622 00	3/4"	10	180			
90 4633 00	1"	10	120			
90 4644 00	1-1/4"	5	70			
90 4655 00	1-1/2"	5	50			
90 4666 00	2"	1	30			



ELBOWS MI x FI

90 4691 00	1/2"	10	420			
90 4692 00	3/4"	10	220			
90 4693 00	1"	10	130			
90 4694 00	1-1/4"	5	75			
90 4695 00	1-1/2"	5	50			
90 4696 00	2"	1	30			



CAPS - Small Bore (not WaterMark approved)

RXCP06	1/8"	10	-			
RXCP08	1/4"	10	-			
RXCP10	3/8"	10	-			



CAPS

90 4901 00	1/2"	20	640			
90 4902 00	3/4"	20	500			
90 4903 00	1"	20	320			
90 4904 00	1-1/4"	10	180			
90 4905 00	1-1/2"	10	130			
90 4906 00	2"	10	80			



THREADED WALL PLATE ELBOW FI BSPT x FI BSPP

90 4239 00	3/4" x 3/4" (Plastic)	1	1			
90 4239 10	3/4" x 3/4" (Plastic)*	1	1			
90 4239 20	3/4" x 3/4" (Plastic)**	10	10			

* with stainless steel U-bolt

** Includes plastic adaptor to suit 3" & 4" posts



SPARE PARTS - THREADED WALL PLATE ELBOW

WALL PLATE ELBOW

49 0001 04	Stainless U-bolt + Nuts for wall plate elbow	1	-			
------------	--	---	---	--	--	--

* Please note that not all products on the page may be Australian made.



ANCILLARY THREADED FITTINGS

PRODUCT NO.	SIZE	ORDER QUANTITY	CARTON QUANTITY			
-------------	------	----------------	-----------------	--	--	--

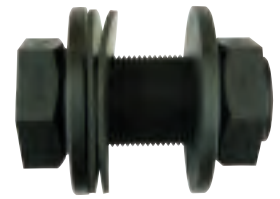
BARREL UNIONS

APU20	3/4"	1	120			
APU25	1"	1	120			
APU32	1-1/4"	1	60			
APU40	1-1/2"	1	60			
APU50	2"	1	35			



TANK OUTLETS

90 1031 00	1/2"	1	-			
90 1032 00	3/4"	1	-			
90 1033 00	1"	1	-			
90 1034 00	1-1/4"	1	-			
90 1035 00	1-1/2"	1	-			
90 1036 00	2"	1	-			



IBC TANK ADAPTOR (SHUTTLE)

51270	2"	1	-			
-------	----	---	---	--	--	--



CORRUGATED TANK GASKETS (FOR USE WITH TANK OUTLETS)* **WHILE STOCKS LAST**

CTG20	1/2" - 3/4"	1				
CTG32	1-1/4"	1				
CTG40	1-1/2"	1				
CTG50	2"	1				



* Please note that not all products on the page may be Australian made.