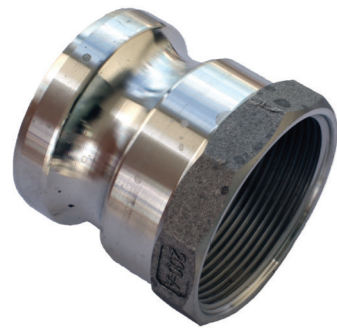


CAMLOCK ID CHART



AAP
INDUSTRIES



TYPE A

MALE CAMLOCK X
FEMALE BSP



TYPE B

FEMALE CAMLOCK X
MALE BSP



TYPE C

FEMALE CAMLOCK X
MALE HOSEBARB



TYPE D

FEMALE CAMLOCK X
FEMALE BSP

WORKING PRESSURES

| SIZE RANGE (mm) | ALUMINIUM, STAINLESS, BRONZE, BRASS | POLY PROPYLENE, NYGLASS |
|-----------------|-------------------------------------|-------------------------|
| 15 | 1034kPa | 862kPa |
| 20-50 | 1724kPa | 862kPa |
| 65 | 1034kPa | 690kPa |
| 75 | 862kPa | 517kPa |
| 100 | 690kPa | 517kPa |
| 125 | 517kPa | N/A |
| 150 | 517kPa | N/A |



TYPE E

MALE CAMLOCK X
MALE HOSEBARB



TYPE F

MALE CAMLOCK X
MALE BSP



TYPE DC

DUST CAP



TYPE DP

DUST PLUG

Ask about our extended range of speciality cams at your local branch

AAP SYDNEY - info.nsw@aapindustries.com.au
AAP BRISBANE - info.sqld@aapindustries.com.au
AAP MELBOURNE - info.vic@aapindustries.com.au

AAP ADELAIDE - info.sa@aapindustries.com.au
AAP PERTH - info.wa@aapindustries.com.au
AAP TOWNSVILLE - info.nqld@aapindustries.com.au

www.aapindustries.com.au

| MATERIAL | TYPICAL APPLICATION |
|---|--|
| ALUMINIUM DIECAST (Conforming to ASTM B 26B 26M) | GENERAL USE / AG / INDUSTRIAL |
| POLY PROPYLENE (BLACK) PP (30% glass filled) | AG SPRAYING EQUIPMENT / CHEMICAL INDUSTRY |
| NY-GLASS (YELLOW) (30% glass filled) | AG SPRAYING EQUIPMENT / CHEMICAL INDUSTRY |
| STAINLESS STEEL 316 | FOOD INDUSTRY / OFFSHORE / CHEMICAL INDUSTRY |